



GENERAL NOTES

TEMPORARY LANE CLOSURE,
TWO WAY TWO LANE ROADWAY

* NOTE: ONE-WAY MIGHT BE OMITTED
PROVIDED ROAD CAPACITY IS
ADEQUATE AND TRAFFIC VOLUMES ARE LIGHT
ALL MEASURES ARE IN METERS

LEGEND

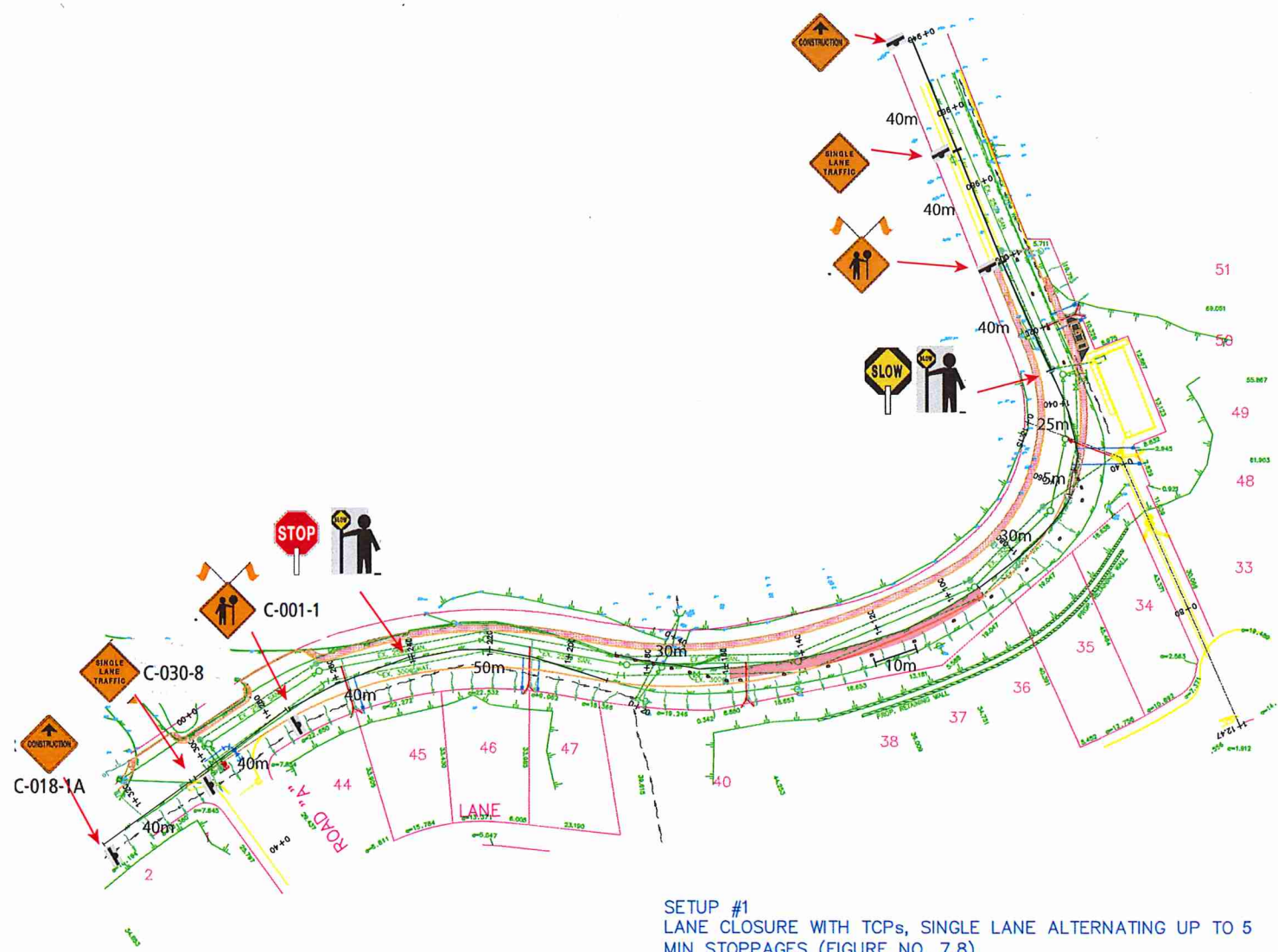
- TYPE "D" MARKER
- TCP - TRAFFIC CONTROL PERSONNEL DIRECTING ACCESS POINTS OF TRAFFIC
- TRAFFIC SIGNS

NIXON ROAD SERVICING AND ROADWORKS

TRAFFIC CONTROL PLAN

MAY 29 2019

SHEET 1 OF 2



SETUP #1
LANE CLOSURE WITH TCPs, SINGLE LANE ALTERNATING UP TO 5
MIN STOPPAGES (FIGURE NO. 7.8)

NTS

SETUP #1

Figure 7.8 Lane Closure with TCPs – Single Lane Alternating – Short and Long Duration
NTS



GENERAL NOTES

Lane Closure with TCPs –
Single Lane Alternating –
Short and Long Duration

TCP MIGHT BE OMITTED
PROVIDED ROAD CLEARANCE IS
ADEQUATE AND TRAFFIC
VOLUMES ARE LIGHT

ALL MEASURES IN METERS

LEGEND

- TYPE "D" MARKER
- TCP - TRAFFIC CONTROL PERSONNEL
DIRECTING ACCESS POINTS OF TRAFFIC
WHEN REQUIRED
- ◄ TRAFFIC SIGNS

NIXON ROAD
PROJECT

MAY 29 2019

SHEET 1 OF 2